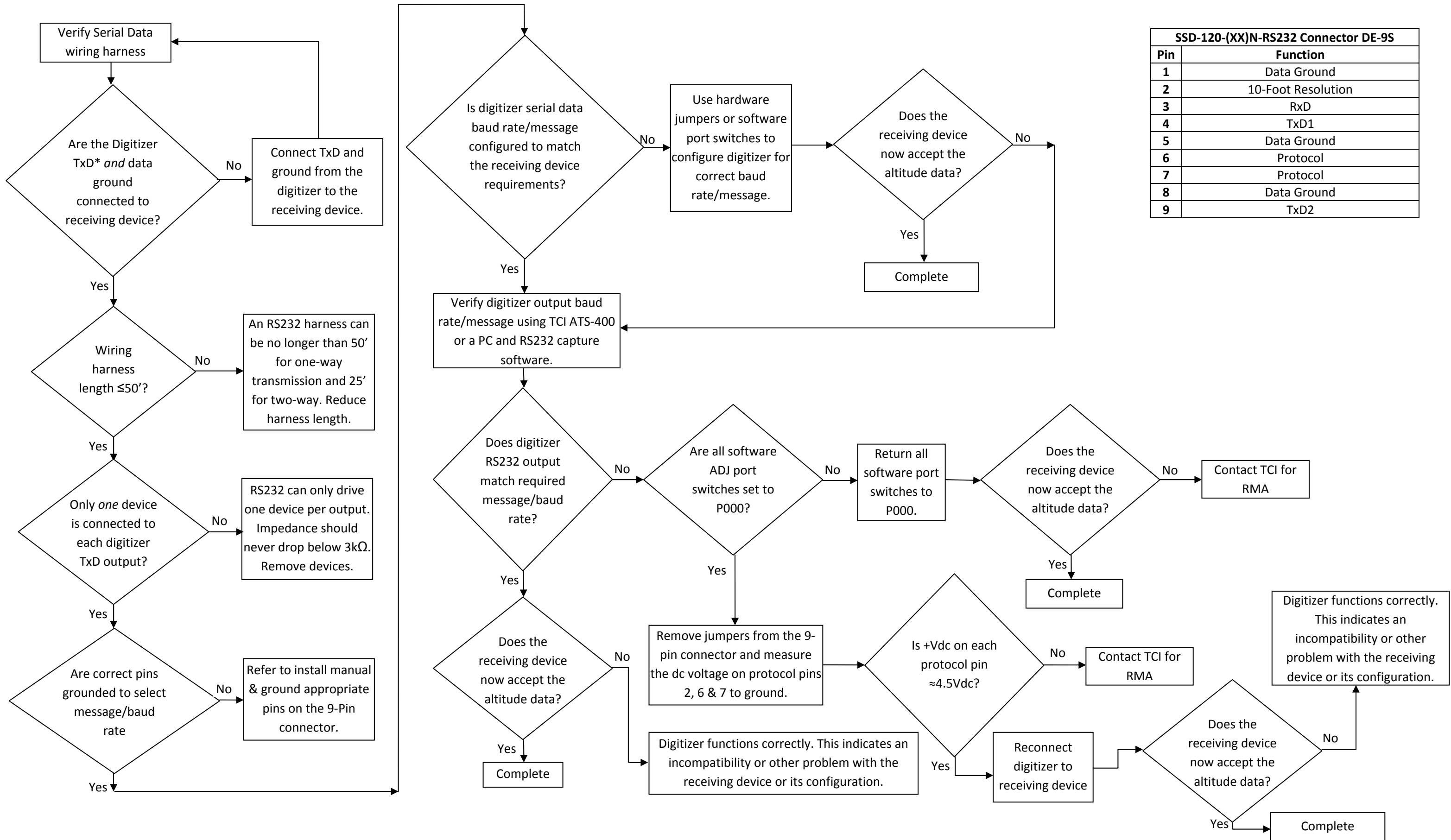


**Serial Data Communication Troubleshooting Flow Chart SSD120-(XX)N-RS232 (Configured for TxD1 and TxD2 transmitting the same baud rate/message.)**



SSD-120-(XX)N-RS232 Connector DE-9S	
Pin	Function
1	Data Ground
2	10-Foot Resolution
3	RxD
4	TxD1
5	Data Ground
6	Protocol
7	Protocol
8	Data Ground
9	TxD2